

Windows Vista™ Users

Important Information - Please Read First!

Installation Path Selection

If you are running a Windows™ Vista computer the default installation path of your RacerMate software will need to be modified slightly. By default the software will want to install itself to the “C:\Program Files\” folder. Vista™ no longer allows any write-to functions into the Program Files folder, so to work around this issue modify the default install path during setup to install into the C:\ root drive. When asked by the installation application where you want to install the software, insert your mouse cursor into the path that might state:

C:\Program Files\CompuTrainer 3D V3 (see Image 1 below. Other applications will have a different path; as in: Velotron 3D or CompCS, etc.).

In the above example change this to “C:\CompuTrainer 3D V3” by back-spacing or deleting the words Program Files\ from the path (see Image 2 below). Future Vista™ installation paths and updates will use this as a default.

If you have any questions regarding this procedure, please contact RacerMate technical support at the numbers or e-mail listed below..

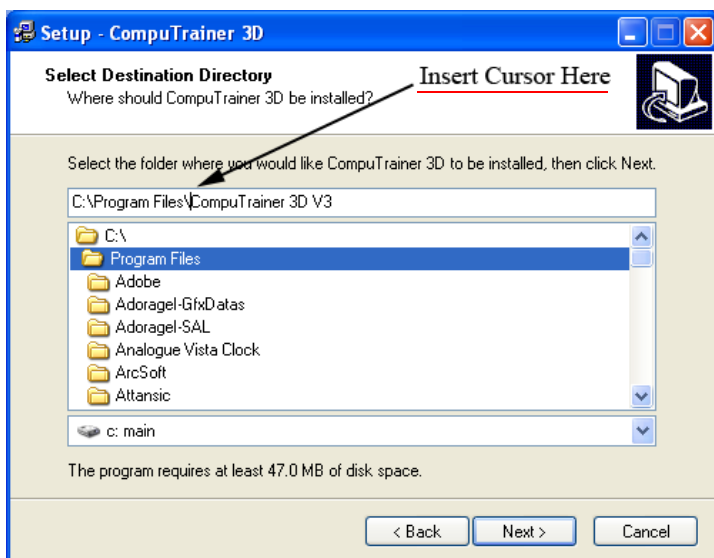


Image 1: The image at the left is what you will see by default when trying to install CompuTrainer 3D V3. You can insert your mouse cursor just after the “\” in Program Files and back-space to remove “Program Files\”.

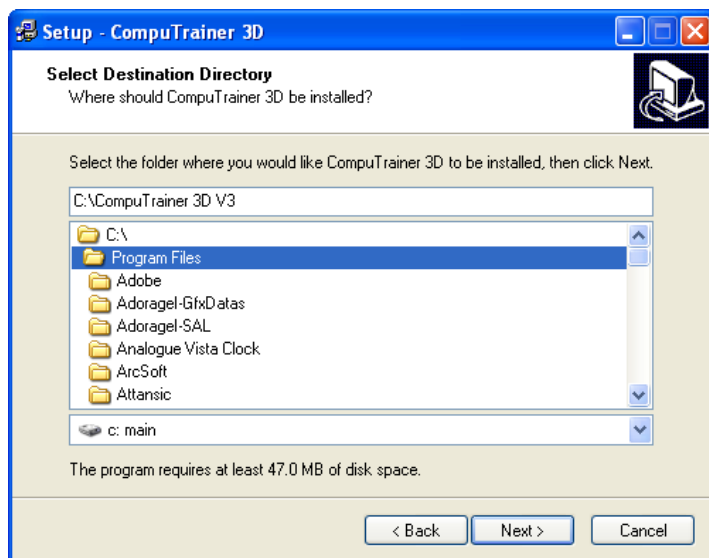


Image 2: Make sure the path now shows: C:\CompuTrainer 3D V3 (if installing CompuTrainer 3D). These same instructions would apply to all other RacerMate Software Applications installed into Vista™

Change from Vista Aero to Vista Basic

In addition, you should also change your color settings in the computer from Vista Aero to Vista Basic by right-clicking the Windows™ desktop and left-clicking Personalize, then choosing Window Color and Appearance. In Color Scheme choose Windows Vista Basic instead of Vista Aero.



Maker of CompuTrainer™ and Velotron™

3016 N.E. Blakeley St. Seattle WA 98105
Tel: (206) 524-7392 Toll Free (800) 522-3610 Fax (206) 523-4961
E-mail: service@racermateinc.com • web site: www.racermateinc.com